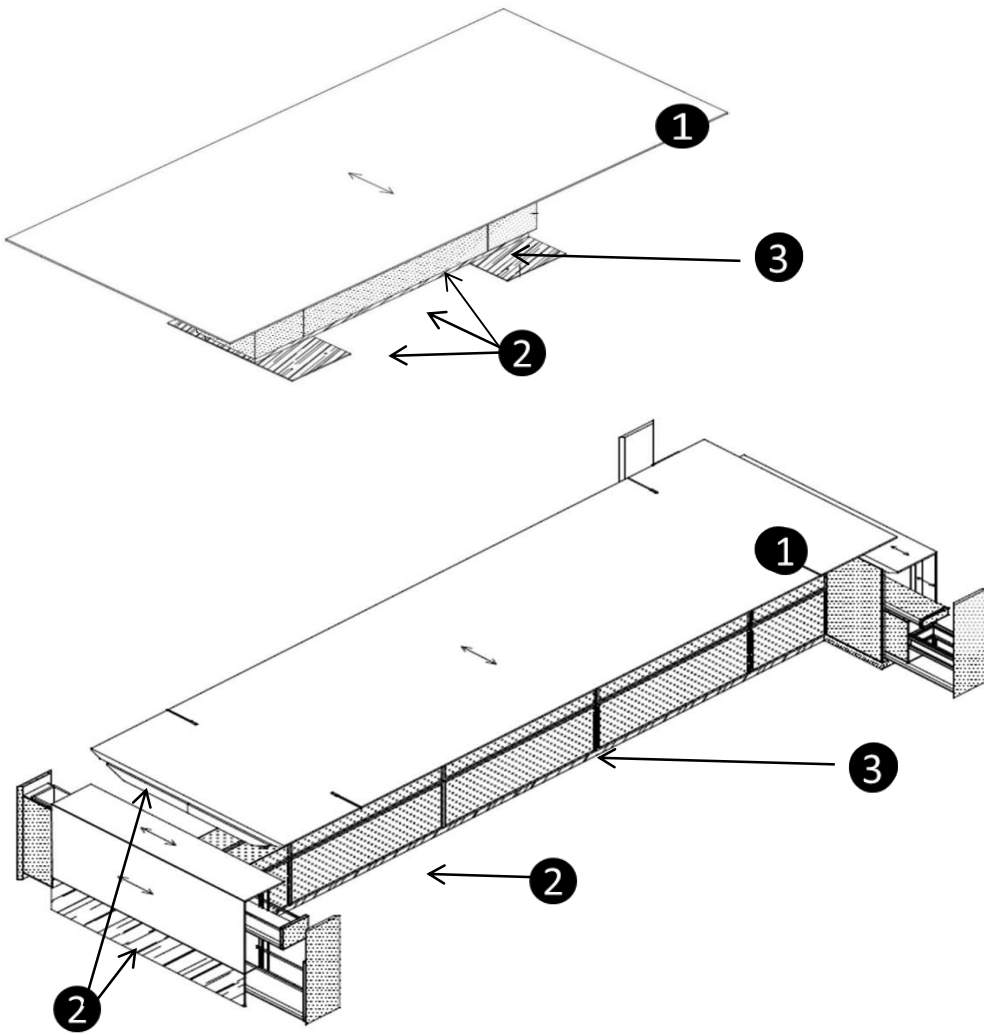


MOTILE

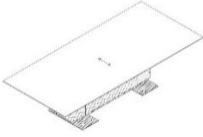
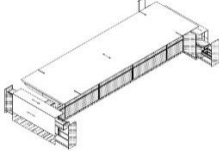
DECCA | CONTRACT



Without End Storage Unit

- ① Veneer worksurface Standard layup)  
- Options: custom veneer pattern
- ② Metal Finish (Power Coat Paint)  
- Options: Premium Metals
- ③ Removeable panels (Lacquer or Veneer)  
- Options: Customer's Own Leather  
End Storage Unit (Lacquer or Veneer)

# MOTILE TABLE

DESCRIPTION	MODEL	STANDARD VENEER	MOTILE VENEER PATTERN UPCHARGE(20)	G1 PREMIUM METAL UPCHARGE(20)	G2 PREMIUM METAL UPCHARGE(20)	COL BASE UPCHARGE(20)	WIDTH	DEPTH	HEIGHT
<b>Motile Table</b> without end storage unit 	MT HTB8442	50909	2545	10182	15273	2545	84	42	30
	MT HTB9642	52722	2636	10544	15817	2636	96	42	30
	MT HTB9648	52759	2638	10552	15828	2638	96	49	30
	MT HTB12042	71906	3595	14381	21572	3595	120	42	30
	MT HTB12048	71947	3597	14389	21584	3597	120	48	30
	MT HTB14448	77261	3863	15452	23178	3863	144	48	30
	MT HTB14454	82593	4130	16519	24778	4130	144	54	30
	MT HTB16854	87209	4360	17442	26163	4360	168	54	30
<b>Motile Table</b> with end storage unit 	MT HTS15054	108918	5446	21784	32675	5446	150	54	30
	MT HTS17254	112774	5639	22555	33832	5639	172	54	30
	MT HTS19454	116629	5831	23326	34989	5831	194	54	30

## NOTE

### FINISHES

For a complete list of finishes please go to [www.deccacontract.com](http://www.deccacontract.com)

### Options:

- Under worksurface drawer
- Under worksurface power drawer
- Decca Charge
- Custom veneer pattern
- Premium veneer
- Premium metal base

Dimensions are in inches and are approximate.

Contact Customer Service if dimensions are critical.

\* Indicates model illustrated by line drawing.